

Rich Mountain Community College

The Mountain Climber

July 2010

Serving the Citizens of the Ouachita Mountains Region since 1983

RMCC Fall Registration Underway Classes Begin August 23

Students wanting to register for fall classes at RMCC can beat the crowd and register now at the Mena campus or at locations in Waldron and Mt. Ida. The fall schedule of classes is posted at www.rmcc.edu.

A preregistration period is scheduled for Tuesday through Friday, August 3 – 6 for those not registered before the first week of August. Hours set for preregistration are:

Tuesday, August 3	9 a.m. – 4 p.m.
Wednesday, August 4	9 a.m. – 6 p.m.
Thursday, August 5	9 a.m. – 6 p.m.
Friday, August 6	9 a.m. – 3 p.m.

A final registration opportunity will be conducted Wednesday through Friday, August 18 - 20 prior to classes beginning August 23. Hours for registration will be:

Wednesday, August 18	9 a.m. – 4 p.m.
Thursday, August 19	9 a.m. – 6 p.m.
Friday, August 20	9 a.m. – 3 p.m.

For assistance with enrolling, financial aid, and registering at RMCC call 479-394-7622.

LPN Pinning and Capping Ceremony



RMCC 2010 LPN Class

Rich Mountain Community College's LPN graduates held Pinning and Capping Ceremonies Saturday, July 10 at the First Baptist Church in Mena. The RMCC 2010 class includes Sasha L. Atchley, Sandra L. Bilderbeck, Jayme L. Bynum, Nina M. Canada, Deborah L. Carter, Amie J. Collum, Mary N. Collum, Kevin R. Cook, Kendra N. Gonzalez, Britney G. Ham, Alice F. Head, Kansas L. Hunt, Alisha M. Jimenez, Billie E. Johnson, Eva M. Mello, Mary A. Nance, Virginia M. Rodriguez, Laurie M. Selph, Laura A. Shaw, Cynthia A. Skinner, Jessi D. Smith, Tarra S. Tinder, Twila R. Webb, Tonia K. Wiseman, and Kaitlin E. Yandell.

Tonia Wiseman, a graduate of this year's LPN class, was chosen by members of the class to be guest speaker at the ceremony.

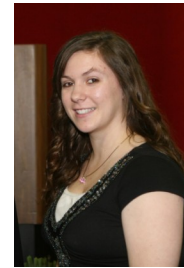
Presidential Scholarships Awarded

Five RMCC Students received Presidential Scholarships this spring to assist them in continuing their education following RMCC graduation.

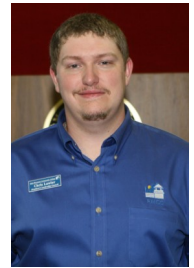
Deborah Lynn Carter has been awarded a RMCC Presidential Scholarship to Arkansas Tech University (ATU). Bobbi Ann Baker and Chris Lawler received scholarships to UA Fort Smith. Savanna Bailey and Tina Jewell will be attending Southern Arkansas University (SAU) on presidential scholarships.



Carter



Baker



Lawler

Book Reviews from RMCC St. John Library

Klinda Rath and Amanda Chamberlain will be submitting book reviews periodically as a reminder of the many opportunities available at RMCC's St. John Library on the College's Mena Campus.

RMCC's library is open all year for use by students and community members. The following review is by Klinda Rath, RMCC library academic technician.

"Are you verbally skilled, yet lack or fear mathematics courses? Overcoming Math Anxiety by Sheila Tobias can help you understand where your math fears come from and what you can do to lessen or lose those fears. Tobias speaks from the experience of gathering biographies of students in a math anxiety clinic and addresses the need for understanding ourselves to help remove the roadblocks to mathematical skills. This book can especially help women to learn that preconceived ideas need not hinder us from learning mathematics."



Rath



Chamberlain

UB Students Participate in Summer Classes

Upward Bound rising sophomores and juniors from eight school districts took classes this summer in a variety of areas including English, science, math, computers, and Spanish in preparation for the 2010-2011 school year.



Pictured are L to R: Front row—Poiema Heinritz, Sierra Moran, Taylor Broach, Austin Smith

2nd Row—Aby Gutierrez, Yuri Hernandez-Ramos, Senia Garcia, Tang Chang, Addie Bush, Alex Henry

3rd Row—Cassie Gear, Kayla Bates, Kimmi Hanners, Melanie Norman, Aly DeCoux, Nicole Yandell

Back Row—Ryan Fought, Jake Singleton, Jeremiah Foster, and Katie Lybrand

RMCC Fall Workforce and Community Service Class Schedule Available Soon!

Contact Maureen Keese

479-394-7622 x 1311
mkeese@rmcc.edu

RMCC Video Production Team Wins Bronze at National Conference

Isaac Gwin and B. J. Appleby of RMCC's Video Production team won the Bronze medal at the SkillsUSA National competition in Kansas City. Gwin and Appleby earned the opportunity to compete nationally this summer after placing first in state competition in the spring.

The national convention had approximately 6000 students from across the country competing in various categories. The state of Arkansas earned four medals with the RMCC team being one of the four.

SkillsUSA is a partnership of students, teachers, and industry working together to ensure America has a skilled workforce.



Cook Named 2010 Outstanding LPN



Kevin Cook was awarded the 2010 Jane Anderson Award honoring this year's outstanding nursing student at Rich Mountain Community College.

Cook was selected by a vote of those working with the nursing students during clinicals throughout the year-long nursing program.

The award was presented to Cook by Ruth Gray in memory of Gray's sister, Jane Anderson, during RMCC's annual LPN Pinning and Capping Ceremony.

RMCC
FOUNDATION
SCHOLARSHIP
DEADLINE

JULY 30

APPLICATIONS
AVAILABLE AT
RMCC.EDU

ETS Students Tour College Campuses

RMCC's Educational Talent Search (ETS) Program recently sponsored a three day tour of colleges and universities in central and northwest

Arkansas for participants of the program who are entering their senior year of high school.



Educational Talent Search (ETS) is one of four TRIO programs at Rich Mountain Community College. ETS prepares students in 6 -12 grades for postsecondary education following high school graduation.

The 39 rising seniors on the tour represented eight school districts from Scott, Polk, and Montgomery counties. While on the trip the students visited eight different college campuses and participated in various social and team-building activities. The students were accompanied by RMCC's TRIO Secondary Programs Director Brenda Miner and RMCC's ETS representatives Brandon Burk, Erika Smith, and Julie Ulmer.



Dr. Wayne Hatcher

I think most of you know the importance of grants to RMCC, but occasionally it is good that we remind ourselves of how fortunate we are to have this source of funding.

When looking at our personnel profile on our Fast Facts posted in Spring 2010 we state we have 21 professional staff and 5 classified support staff funded by grants. TRiO programs make up much of that number and we are very fortunate to have four of the TRiO programs housed on our campus and area sites. These are totally funded by federal dollars and their missions support us in so many ways. Educational Talent Search (ETS) and Upward Bound (UB) prepare students in the region for the transition from high school to postsecondary education and training. Educational Opportunity Center (EOC) helps adults enter college for training and education. Student Support Services (SSS) offers services to college students when in need of advising, tutoring, transfer opportunities, etc. As you glance through this newsletter you will see a sampling of what ETS and UB have been doing so far this summer, and I encourage you to watch for more information about their activities in the weeks ahead.

Career Pathways is another grant program and is funded by the State. It is designed to improve the earnings and help in receiving postsecondary education to obtain employment in high wage, high demand jobs of Arkansas' low-income, TANF-eligible adults. In addition they offer assistance with college tuition, transportation, and childcare. I am pleased to report that RMCC's Career Pathways program received word they met and exceeded all their performance goals for the recent reporting cycle.

Grants and those employed in the various programs are a great benefit for the region. Of course you are already aware of Pell Grants, and when these and our Adult Education Program are added to these other grants, they bring in approximately \$4,000,000 into the local economy each year—and this does not include some smaller grants we currently receive. As many in today's economy, we are on a tight budget. Because of the budget issues, we are always looking and listening for more opportunities to become involved in grants, partnerships, and consortiums that might help us make our resources go further. We have an entire service area that we want to provide training and education. RMCC is proud of the many services we offer and pleased to work with our grant-funded programs in making a difference for the region.

RMCC Offering CNA Course at Waldron this Fall

Certified Nursing Assistant (CNA) Classes will be offered at RMCC-Waldron beginning on September 20, 2010. Classes will meet on Tuesdays, Wednesdays, and Thursdays from 10 a.m. to 2 p.m. The nine-week course includes clinical training as well as classroom instruction with clinical times determined at a later date.

The course is designed to prepare individuals to work as certified nursing assistants and also to take the Arkansas Nursing Assistant Competency Examination.

Registration for the course is now open and will continue through September 2, 2010. To register or to obtain more information, visit the Mena campus at 1100 College Drive or the Waldron location at 456 W Sixth Street.

Details by phone can be obtained by calling any of the following individuals in Mena at 479-394-7622: Jeannie Lewis, extension 1390; Betty Roberts, extension 1310; Jeanette Berry, extension 1644; Tammy Odom, extension 1453; Lura Powell extension 1452; or Mary Standerfer, extension 1420. Tammye Sherrill and Lisa Harrison can be contacted in Waldron by calling 479-637-5502.