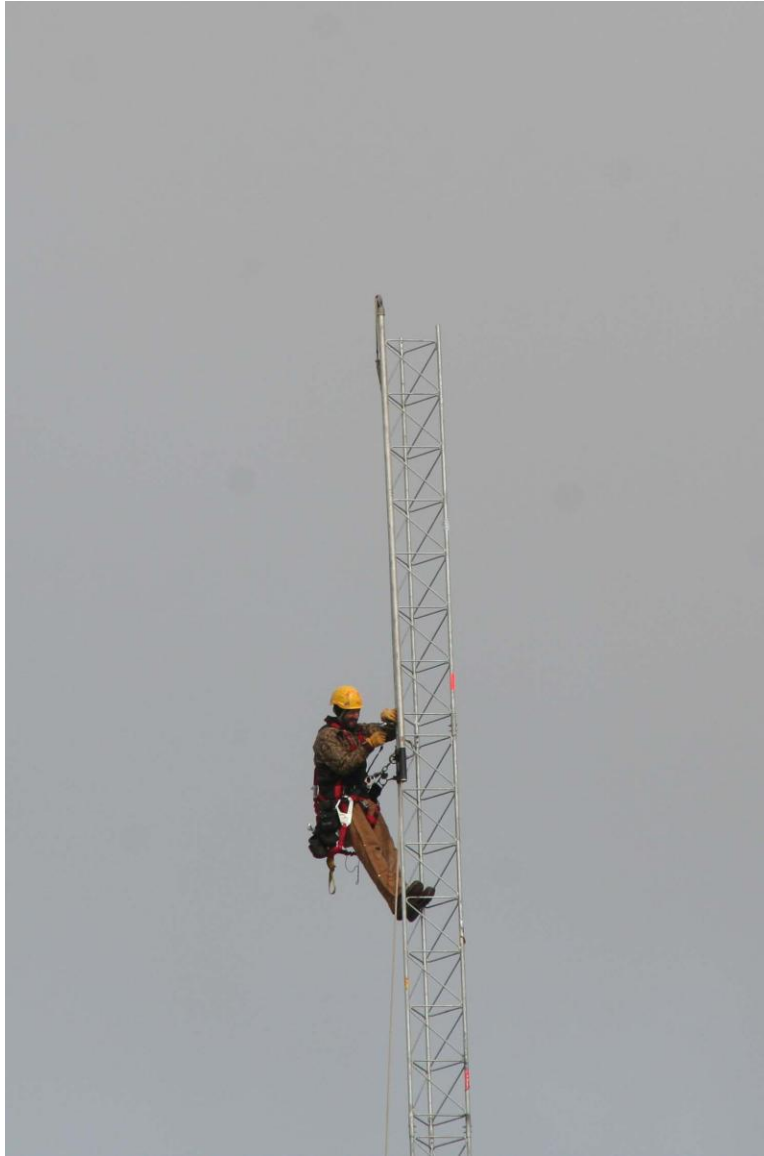


## RMCC's New Radio Tower Adds Power to Station



RMCC's Radio Station has a new location (88.9 FM) and a new tower, making the station five times more powerful than before. According to Dr. Rudi Timmerman, Director of RMCC TV and Radio, the project to put up a new tower has been in the works for over two years and was made possible through a variety of funding sources.

The RMCC Foundation, Mena Regional Health System, Max Pearson, and The Speairs Grant all contributed to the project. In addition, RMCC Radio and TV students have been making videos to sell and producing advertisements to raise revenue to assist with funding the new tower.

A much smaller tower located on campus was blown down during the tornado and a separate tower feeding RMCC Radio was located at an off campus site. Now the 199 foot tower is located on the Mena Campus and has lights on top to make it visible to incoming aircraft to the area. According to Timmerman, the station signal can now be picked up as far as Wickes whereas before it only reached to Hatfield south of Mena.

The 500 watt station is not only more powerful, but brings the station some options for future consideration that were unavailable before. Timmerman encourages the community to listen to 88.9 FM for community and RMCC news.